

MILLING STUART PTY LTD

34 Bolaro Street, PO Box 96 DUNEDOO NSW 2844
P: 02 6375 1009 E: office@millingstuart.com.au

Sheep Market Report

29TH JUNE 2022 - A YARDING OF 4000 SHEEP & LAMBS, WITH 3500 LAMBS AND THE BALANCE SHEEP.

A good line up of heavy lambs this fortnight, struggled for competition with the absence of a major local processor. Heavy trade and exports were \$8-12/hd cheaper while the secondary types with longer skins or lacking shape were \$15-20/hd cheaper. The mutton job was also \$15-20/hd cheaper mainly due to a major local exporter closed for maintenance.

HIGHLIGHTS

PJ & CA Sullivan: xl \$260.00
TM & CM Ward: xl \$248.00
Gimore Farms: xl 245.00
Langdene Pastoral Co: xl \$242.00

QUOTATIONS

XHEAVY X LAMBS (30+KG) \$210 ~ \$260
HEAVY X LAMBS (26-30KG) \$190 ~ \$206
MEDIUM X LAMBS (22-26KG) \$148 ~ \$185
MERINO LAMBS
X EWES \$155 ~ \$170
MERINO EWES \$110 ~ \$130

PRICES - LAMBS

PJ & CA Sullivan	xl	\$260.00
TM & CM Ward	xl	\$248.00
Gilmore Farms	xl	\$245.00
Langdene Pastoral Co	xl	\$242.00
Pilca Butta Partnership	xl	\$240.00
MJ & KJ Stanford	xl	\$235.00
Yeomont Trading	xl	\$228.00
PFT McGirr	xl	\$228.00
Alto Rural Pty Ltd	xl	\$227.00
DJ & RM Rhodes	xl	\$225.00
Birkalla Partnership	xl	\$224.00
Gilmore Farms	xl	\$220.00
R & M Goodear Pty Ltd	xl	\$218.00
Yeomont Trading	xl	\$217.00
Darren Taaffe	xl	\$215.00
WF Yeo	xl	\$212.00
Alto Rural Pty Ltd	xl	\$212.00
RA & L Obst	xl	\$210.00
MJ & KJ Stanford	xl	\$210.00
D & M Deutscher	xl	\$208.00
JW JM & BJ Inder	xl	\$208.00
James Berry	xl	\$206.00
RB & JA Bowman	xl	\$206.00
Birkalla Partnership	xl	\$203.00
Curtis Bros	xl	\$196.00

PRICES - LAMBS CONTINUED

RA & L Obst	xl	\$196.00
Yeomont Trading	xl	\$195.00
James Berry	xl	\$193.00
RB & JA Bowman	xl	\$193.00
R & M Goodear Pty Ltd	xl	\$190.00
IJ & VC Deutscher	xl	\$189.00
JW JM & BJ Inder	xl	\$188.00

PRICES - SHEEP

Darren Taaffe	xh	\$200.00
Bulliroy Creek Pastoral Co	xh	\$200.00
Gilmore Farms	xh	\$190.00
Gilmore Farms	xh	\$185.00
Birkalla Partnership	xh	\$185.00
Warkton Valley	xh	\$178.00
Warkton Valley	xh	\$178.00
WF Yeo	xh	\$170.00
DJ & RM Rhodes	xh	\$170.00
Gilmore Farms	xh	\$170.00
Pilca Butta Partnership	xe	\$170.00
D & M Deutscher	xh	\$160.00
Warkton Valley	xh	\$160.00
Darren Taaffe	xsh	\$157.00
R & M Goodear Pty Ltd	xsh	\$155.00
Sue McGoldrick	xh	\$150.00

FORTHCOMING SALES

Fat Sheep & Cattle Sale
WEDNESDAY 13TH JULY

Fat Sheep & Cattle Sale
WEDNESDAY 27TH JULY

Fat Sheep & Cattle Sale
WEDNESDAY 10TH AUGUST

Fat Sheep & Cattle Sale
WEDNESDAY 24TH AUGUST

Fat Sheep & Cattle Sale
WEDNESDAY 7TH SEPTEMBER

Fat Sheep & Cattle Sale
WEDNESDAY 21ST SEPTEMBER

Angus Stuart
0427 751009
angus@millingstuart.com.au

Jamie Stuart
0427 467322
jamie@millingstuart.com.au

Cameron Finemore
0477 781009
cameron@millingstuart.com.au



Cattle Market Report

29TH JUNE 2022 - 540 CATTLE YARDED

A very good run of cattle this week with plenty of feeders and cows. Feeder cattle this week saw a fall of 30-40c/kg on the steers while heifers were also cheaper 14-25c/kg. Any cattle that were suitable to kill were less affected. Heavy steers and heifers also saw a cheaper trend to be 10-15c/kg cheaper with quality a factor. Cows in larger numbers saw the best of the cows remain firm with the secondary end 20c/kg cheaper.

HIGHLIGHTS

A & I Cavallaro Pty Ltd: strs 564.2c/kg (370kg) rel \$2,085.88

Benjamin Sweeney: strs 549.2c/kg (470kg) rel \$2,581.24

MH & SR Dent: strs 538.2c/kg (428kg) rel \$2,302.03

Weronga Pty Ltd: cows 360.0c/kg (789kg) rel \$2,841.43

G R J & A Larkin: strs 450.0c/kg (646kg) rel \$2,907.00

QUOTATIONS

Yearling Strs: (300kg - 380+kg)	520.0-564.2 c/kg
Yearling Hfrs: (300kg - 380+kg)	500.0-532.2 c/kg
Trade Steers: (400kg - 500kg)	500.0-555.0 c/kg
Trade Heifers: (400kg - 500kg)	470.0-500.0 c/kg
Export Steers: (500kg+)	400.0-527.2 c/kg
Export Heifers: (500kg+)	400.0-470.0 c/kg
Cows: (3-4 score)	300.0-360.0 c/kg

VENDOR	C/KG	AVG. WGT	\$/HD	VENDOR	C/KG	AVG. WGT	\$/HD	VENDOR	C/KG	AVG. WGT	\$/HD	
YEARLINGS				HEAVY HEIFERS				COWS				
A & I Cavallaro Pty Ltd	s	564.2	370	\$2,085.88	JR & SG Bourke	532.2	456	\$2,428.16	Weronga Pty Ltd	360.0	789	\$2,841.43
A & I Cavallaro Pty Ltd	s	555.0	416	\$2,307.21	J & A Maben F/T	501.2	472	\$2,366.38	MB & KA Duce	360.0	685	\$2,466.00
MH & SR Dent	s	538.2	428	\$2,302.03	Langdene Pastoral Co	500.0	480	\$2,400.00	Julia Stuart	356.2	695	\$2,475.59
MH & DS Rouse	s	538.2	366	\$1,968.27	MH & SR Dent	500.0	455	\$2,275.00	Weronga Pty Ltd	356.0	677	\$2,408.93
RJ & JL Redding	s	536.2	355	\$1,903.51	DH & ML Morice	482.2	457	\$2,202.05	MH & SR Dent	356.0	628	\$2,233.90
Birkalla Partnership	s	535.2	429	\$2,295.63	DH & ML Morice	470.0	515	\$2,420.50	Kareba Pastoral Co	351.0	678	\$2,378.03
Lockerbie Partnership	s	530.0	351	\$1,860.30	Cobbora View	438.2	520	\$2,278.64	G R J & A Larkin	349.2	798	\$2,786.62
MB & KA Duce	s	528.2	370	\$1,954.34	MH & SR Dent	430.0	560	\$2,408.00	Weronga Pty Ltd	346.0	571	\$1,974.36
RJ & JL Redding	h	527.2	400	\$2,108.80	G R J & A Larkin	430.0	520	\$2,236.00	Cobbora View	340.0	613	\$2,082.50
Chris Hallett	s	524.2	358	\$1,874.02	MH & SR Dent	420.0	610	\$2,562.00	Lockerbie Partnership	340.0	575	\$1,955.00
JM & RG Sheridan	s	521.2	427	\$2,226.27	CJ Bourke	420.0	540	\$2,268.00	Weronga Pty Ltd	340.0	570	\$1,938.00
Birkalla Partnership	s	520.2	428	\$2,227.11	MH & SR Dent	420.0	455	\$1,911.00	Cobbora View	340.0	515	\$1,751.00
RC & BJ Abdilla	h	520.0	398	\$2,071.33	HEAVY STEERS				Tandara Pastoral	339.2	541	\$1,835.92
Chris Hallett	s	520.0	385	\$2,002.00	Benjamin Sweeney	549.2	470	\$2,581.24	MB & KA Duce	330.0	505	\$1,666.50
MB & KA Duce	s	520.0	380	\$1,976.00	JR & SG Bourke	527.2	525	\$2,767.80	Chris Hallett	320.0	538	\$1,720.00
MH & DS Rouse	h	520.0	369	\$1,919.67	Birkalla Partnership	520.2	450	\$2,340.90	Weronga Pty Ltd	320.0	485	\$1,552.00
JR & SG Bourke	s	519.2	418	\$2,167.66	JR & SG Bourke	519.2	458	\$2,379.67	Tandara Pastoral	315.0	515	\$1,622.25
JM & RG Sheridan	h	518.2	380	\$1,969.16	Birkalla Partnership	518.2	490	\$2,539.18	VJ & JJ Turner	313.2	580	\$1,816.56
JM & RG Sheridan	h	517.2	400	\$2,068.80	A & I Cavallaro Pty Ltd	518.2	475	\$2,461.45	Weronga Pty Ltd	310.0	615	\$1,906.50
RC & BJ Abdilla	s	516.2	405	\$2,090.61	DH & ML Morice	515.2	458	\$2,361.33	Kareba Pastoral Co	310.0	590	\$1,829.00
A & I Cavallaro Pty Ltd	s	510.0	436	\$2,225.79	MH & SR Dent	510.2	475	\$2,423.45	Weronga Pty Ltd	310.0	505	\$1,565.50
MB & KA Duce	h	510.0	367	\$1,872.43	Birkalla Partnership	510.2	472	\$2,406.44	Tandara Pastoral	305.0	499	\$1,522.46
Lockerbie Partnership	h	510.0	320	\$1,632.00	Birkalla Partnership	509.2	450	\$2,291.40	JM & RG Sheridan	300.0	440	\$1,320.00
MB & KA Duce	h	505.2	355	\$1,793.46	Del Monts Pty Ltd	493.2	508	\$2,506.07	BULLS			
JM & RG Sheridan	s	504.2	389	\$1,961.34	G R J & A Larkin	450.0	646	\$2,907.00	G R J & A Larkin	500.2	455	\$2,275.91
Chris Hallett	h	500.0	375	\$1,875.00	JR & SG Bourke	450.0	555	\$2,497.50	Kareba Pastoral Co	310.0	702	\$2,175.17
RJ & JL Redding	s	500.0	353	\$1,766.67	Birkalla Partnership	450.0	495	\$2,227.50	Warren Petherbridge	305.0	830	\$2,531.50
PR & JA Clark	s & h	500.0	343	\$1,712.50	MB & KA Duce	450.0	450	\$2,025.00	Kareba Pastoral Co	300.0	638	\$1,915.00
Chris Hallett	s	498.2	395	\$1,967.89					MB & KA Duce	295.0	685	\$2,020.75
Warren Petherbridge	s	490.0	420	\$2,058.00					WF Yeo	290.0	625	\$1,812.50
C & J Hogan	h	485.0	399	\$1,935.15								
RC & BJ Abdilla	h	485.0	339	\$1,644.96								
C & J Hogan	h	481.2	442	\$2,126.90								
Birkalla Partnership	s	471.2	445	\$2,096.84								
Birkalla Partnership	s	471.2	434	\$2,043.83								
A & I Cavallaro Pty Ltd	s	470.0	416	\$1,956.38								
J & A Maben F/T	h	470.0	400	\$1,880.00								
C & J Hogan	s	454.2	422	\$1,915.21								



FOR SALE

KEENAN 170FPRS FEED CART

GOOD WORKING ORDER

\$18,000 +GST ONO

CALL THE OFFICE

02 6375 1009



NLIS SHEEP TAGS

- 2022 & 2030 is **RED**
- 2021 & 2029 is **YELLOW**
- 2020 & 2028 is **PURPLE**
- 2019 & 2027 is **GREEN**
- 2018 & 2026 is **ORANGE**
- 2017 & 2025 is **WHITE**
- 2016 & 2024 is **BLACK**
- 2015 & 2023 is **BLUE**

Any year post breeder tag is **PINK**



Australia's Livestock Marketplace

Angus and Jamie are fully accredited Sheep & Cattle AuctionPlus Livestock Assessors. If you are interested in listing livestock on AuctionsPlus please contact us.

KEEP UP TO DATE WITH OUR FACEBOOK PAGE.



When selling through the saleyards, if you wish to receive your prices via email please advise our office of your email address.

Your circular can also be emailed to you. If you wish to receive the circular by email please advise.
Ph: 02 63751009 or
E: office@millingstuart.com.au

rma network.

Accredited Member



JOKE OF THE WEEK!

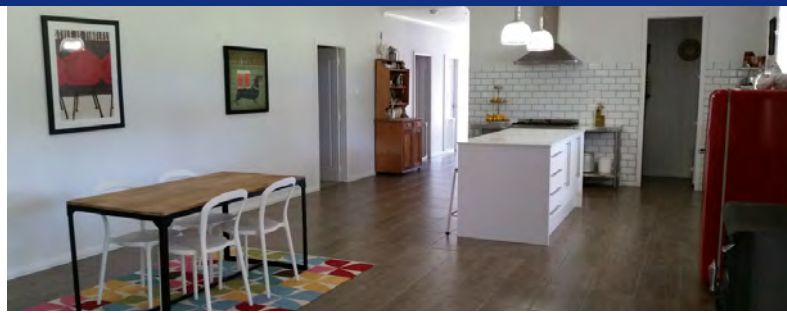
I had lunch with two of my unmarried friends. One is engaged, one is a mistress, and I have been married for twenty-plus years. We were chatting about our relationships and decided to amaze our men by greeting them at the door wearing a black bra, stiletto heels and a mask over our eyes. We agreed to meet in a few days to exchange notes. Here's how it all went:

My engaged friend:
The other night when my boyfriend came over he found me with a black leather bodice, tall stilettos and a mask. He saw me and said, 'You are the woman of my dreams...I love you.' Then we made passionate love all night long.

The mistress:
Me too! The other night I met my lover at his office and I was wearing a raincoat, under it only the black bra, heels and mask over my eyes. When I opened the raincoat he didn't say a word, but he started to tremble and we had wild sex all night.

Then I had to share my story:
When my husband came home I was wearing the black bra, black stockings, stilettos and a mask over my eyes. When he came in the door and saw me he said, "What's for dinner, Zorro?"

REAL ESTATE

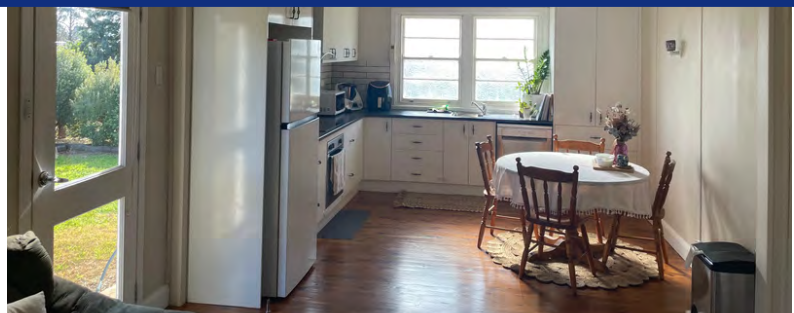


94-96 COBBORAH STREET

\$370,000 - \$400,000

FOUR BEDROOM STUDY TWO BATHROOM LARGE DOUBLE BLOCK

NEW LISTINGS ~ DETAILS ON OUR WEBSITE



21 WALLAROO STREET

\$320,000

TWO BEDROOM STUDY 1.5 BATHROOM BEAUTIFULLY RENOVATED